

# LX Series

EXTREME APPLICATION INDUSTRIAL LIGHTING



HIGH TECH

DURABLE



# LX Series

## Extreme Application LED Lighting



### Product Information

The **LX** series is a **high efficacy, durable** LED linear light designed to withstand the harsh conditions of today's demanding environments. This next generation **IP67 LED linear light** is ideal for applications inside large wind turbines. It can be mounted vertically for tower shafts, and horizontally in the nacelle and control platforms, and requires **virtually zero maintenance**.

The **LX** Series is available in 20, 40 and 60 Watts and provides ultra-wide glare free, **155° comfortable uniform lighting** for all working environments. It has excellent thermal management to ensure **long LED life** with extended lumen maintenance resulting in cost effective solutions with a **short ROI period**. It comes with versatile mounting options with an **accessible junction box** for easy wiring and installation.

US PATENT # 8,272,765 / 6,830,364 / US 2014 / 0301076A1  
Other US and international patents pending.

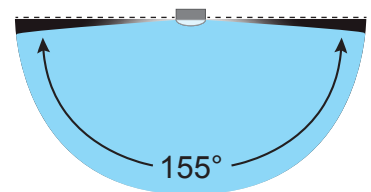
# LX Series

## Extreme Application LED Lighting



### Advantages of LX Series

- IP67-rated (water, dust & vapor-proof) LED linear luminaire
- Glare-Free, 155° wide angle optics reducing required fixtures by up to 25%
- Dimmable smart circuitry with motion sensing for maximum flexibility
- Lightweight low profile design with an accessible junction box for easy wiring
- High efficacy fixture with durable construction and versatile mounting options
- Anodized aluminum, corrosion-resistant design for use in offshore applications
- Cost effective solution as a true LED replacement with a short ROI Period
- Optional all-inclusive rechargeable battery backup system
- Flexible wiring and mounting configurations to suit any application
- Ideal for environmentally-demanding locations with a 7 Year Limited Warranty
- Designed and engineered in USA



Wide Angle Optics

### Applications

- Land-Based and Offshore Wind Turbines
- Tower Shaft Interior
- Nacelle Interior
- Mid-Tower Platforms
- Transformer Rooms

# LX Series

## Extreme Application LED Lighting

### Specification

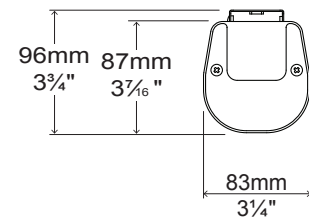
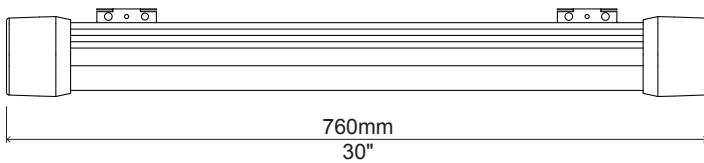
Model	LX072	LX104**	LX1E4	LX106
Fixture Watts *	20 W	40 W	40 W	60 W
Lumens (Total) *	3,200 Lumens	6,240 Lumens	2,040 Lumens	9,120 Lumens
Efficacy *	160 Lumens / W	156 Lumens / W	170 Lumens / W	152 Lumens / W
Number of LEDs & Driving Current	104@700mA	208@1500mA	208@1500mA	286@1500mA
T <sub>s</sub> - Solder Point Temp *	46°C	51°C	38°C	56°C
L70 Rating @ T <sub>a</sub> 25°C	> 110K hours	> 100K hours	> 140K hours	> 90K hours
Light Beam Angle	160° @ 80% Flux			
Operational Temperature (T <sub>a</sub> )	-40°C ~ 55°C			
Input Voltage	100-277VAC 50~60Hz			
LED Model	Lumileds / Nichia / Cree			
CRI	85			
Lighting Control	Dimmable (0-10V, PWM) / Motion Sensor			
Warranty	7-Year Limited			
Storage Temp. / Humidity	-40°C ~ 80°C / IP67 Waterproof Rated Fixture			
Transient Surge Protection	4kV / 2kA			

\* Test data @ T<sub>a</sub> 25°C

\*\* LX1E4 is a standard LX104 with an all-inclusive emergency battery backup system  
NOTE: All Values Have ±7% Tolerance



### LX072



### LX104 / LX1E4 / LX106

